



# JC METALES

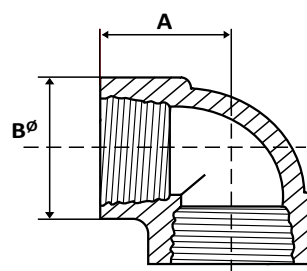
## INDUSTRIALES S.A.C.

CONEXIONES - TUBERIAS - VALVULAS

### ELBOW - CODOS

#### ASME / ANSI B16.11

ROSCADO THREADED									
NW	2'000 LBS			3'000 LBS			6'000 LBS		
	A	B $\phi$	Weight Peso	A	B $\phi$	Weight Peso	A	B $\phi$	Weight Peso
Pulg.	mm	mm	Kg. %	mm	mm	Kg. %	mm	mm	Kg. %
1/4	24.5	25.5	14	24.5	25.5	14	28.5	33.5	30
3/8	24.5	25.5	12.5	28.5	33.5	27	33.5	38	45.5
1/2	28.5	33.5	22	33.5	38	41.5	38	46	72
3/8	33.5	38	32	38	46	65	44.5	55.5	115.5
1	38	46	47	44.5	55.5	103.5	51	62	161.5
1 1/4	44.5	55.5	74	51	62	130.5	60.5	75.5	267
1 1/2	51	62	92.5	60.5	75.5	221.5	63.5	84	320.5
2	60.5	75.5	153.5	63.5	84	247	86	110	794
2 1/2	76	92	298	86	110	734	95.5	120.5	985
3	86	110	454	95.5	120.5	778	114.5	152.5	1.800
4	114.5	152.5	1.328	114.5	152.5	1.328	-	-	-



S.W. - ENCHUFE Y SOLDADURA										
NW	3'000 LBS					6'000 LBS				
	A	B $\phi$	D $\phi$	E	Weight Peso	A	B $\phi$	D $\phi$	E	Weight Peso
Pulg.	mm	mm	mm	mm	Kg. %	mm	mm	mm	mm	Kg. %
1/4	24.5	25.5	14	13.5	12	-	-	-	-	-
3/8	24.5	25.5	17.5	11	10.4	-	-	-	-	-
1/2	28.5	33.5	21.7	12.5	21.8	33.5	38	21.7	14.5	40
3/4	33.5	38	27.1	14.5	30.8	38	46	27.1	16	62.1
1	38	46	33.8	16	46.7	44.5	55.5	33.8	17.5	102.1
1 1/4	44.5	55.5	42.6	17.5	67.1	51	62	42.6	19	132.1
1 1/2	51	62	48.7	19	90.2	60.5	75.5	48.7	22	237
2	60.5	75.5	61.1	22	136.1	63.5	84	61.1	22	272.4
2 1/2	76	92	73.8	34.5	280	86	110	73.8	30	580
3	86	110	89.8	29	440	95.5	120.5	89.8	32	840
4	114.5	152.5	115.4	48	1.330	114.5	152.5	115.4	35	1.580

